

### Specifications

Model Number	RN4081
Power source	DC 3.6V (lithium battery components )
Dimensions	102 (L)×9.3(D)mm
Weight	14.5g (with battery components )



# Super Cigarette

## User's Manual



Please read this User's manual completely before use  
please keep this manual in good condition for possible future reference

- Congratulations and thank you for purchasing the Super Cigarette.
- Now you can start a new beginning for a healthier lifestyle ,which also creates an environmental friendly living space for your family and friends.
- Please read this manual carefully before using the product in order to fully and prudently use it in accordance with the requirements herein.

• **Special Notice:**

1. To avoid ovet frequent usage of the product ,once smoke it for sixteen times within one minute, the indicator light will continuously flash ten times (about four seconds) for reminding.
2. If every time the user inhales more than five seconds ,the light will continuously flash 10 times (about four seconds)tips do not affect normal use.
3. If the indicator light will continuously flash for 30 times (about nine seconds),please replace the battery components with a fully charged.

## Content

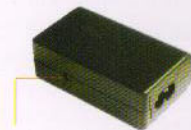
Components of the product .....	1
Product introduction.....	2
Notices to use.....	3
Cautions .....	4
Description of the product.....	5-7
How to use .....	8-12
Suitable user and forbidden user .....	13
Troubleshooting .....	14
Instructions to atomized cartridge .....	15-17



Battery components



Super cigarette



car charging hole  
(fixed with a car charging plug) **Charger**



**Power line**



**Atomized cartridge**

The Super Cigarette is a nonflammable electronic atomizing device, adopts the advanced microelectronic technology and supercritical physical atomized technology, to atomize the high-purity nicotine diluent, which is extracted from tobacco and has the exciting function ,so that smoker can take it in The liquid in the cartridge contains nicotine , perfumery compound special for cigarette and ordinary food additives .It's provided with efficacies similar to those of the ordinary cigarette .It can refresh the smokers and satisfy their smoking addiction, making them happy and relaxed.The essential differences between the Super Cigarette and the ordinary cigarettes are as follows:

1. No tar and other carcinogenic substance or harmful ingredients to human body.
2. No ignition required, without the danger hence will not lead to the of over 4000 chemical substance Produced by the ordinary cigarettes, like carbon monoxide.
3. Harmless to other and the environment, without the danger of second-hand smoking.
4. No possibility to cause fire. It can be used safely in most No-smoking places.

1. The special components must be used and the proper operation procedures must be followed to prevent any unnecessary malfunction and damage of the product, such as cartridge, battery components, charger and power line.
2. Replace the cartridge with a new one as the smoke volume is reduced.
3. If the indicator light will continuously flash for 30 times (about nine seconds), please replace the battery components with a fully charged.
4. The charger can work in a normal condition with the voltage at AC100V-240V, 50/60Hz, or DC6-24V.
5. Keep the Super Cigarette separated from other articles and avoid collision.
6. The Super Cigarette is completely free from second-hand smoking, absolutely harmless to the surrounding people and the environment. It never needs to be lighted and is without the hidden danger of fire accident. So it can be safely used in public places.
7. Once some problem occurs in this product,please have it repaired in the designated repair sites,and don't dismantle it by yourself,which will bring damages to it and endanger yourself.

1. Keep it away from high temperature environment in use or storage.
2. Keep it and its special components out of children's reach, and avoid improper operation.
3. For people with adverse reaction after using this product, it is recommended to use the cartridge with lower nicotine content or no nicotine.
4. Please protect mucous membrane from direct contact with the nicotine liquid contained in the atomized cartridge.
5. Please properly keep the charged battery components, and prevent it from mixing with metal articles in your pocket, wallet or other bags. The conductors can bring about short circuit, heating or damages to the battery components.
6. It's better to use the Super Cigarette smoking accordant to the time and frequency of smoking a ordinary cigarette.
7. Please strictly abide by relevant local laws and regulations on driving. Don't use the Super Cigarette while driving, and keep it properly to avoid damages to it caused dy collision.
8. When try to clean the charger, you must unplug it from the power supply beforehand. It is absolutely prohibited to handle the charger outdoors or in a damp environment.

### I. Structure of the Super Cigarette body

The Super Cigarette body is composed of atomizing device, microcomputer controlled circuit and lithium battery components. An operating mode indicator light at tip of the battery components.



#### Note:

Unscrew by turning to the left  
Screw by turning to right

### 2. Atomized cartridge

The atomized cartridge is composed of an inhaler and a liquid container. The liquid container contains nicotine diluents which are ready to be atomized; it does not contain ingredients harmful to human body, such as tar and carcinogenic substance. The inhaler and liquid container are disposable.

According to nicotine content, the atomized cartridges are classified into four kinds: high, medium, low and zero.



Atomized cartridge



Sealed cap



Liquid container

### 3. Battery components and Charger

The Super Cigarette employs a 3.6V special lithium battery components and special charger, which cannot be replaced by other lithium battery and charger. The input supply voltage of the charger: AC100-240V, 50/60Hz, or DC 6-24V. Attention shall be paid to whether the rated value of local supply voltage is accordant to that of this charger or not during traveling. The circulatory using frequency of the battery components will be no less than 200 times.



Battery components



power plug

car charging hole  
(fixed with a car charging plug)

Battery components screw in

**Installation method:**

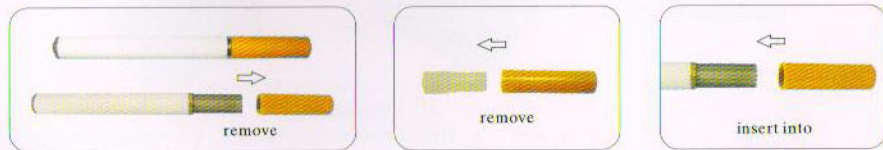
Step 1: Screw in the battery components at the front of the atomizing device by turning it right;

Step 2: Unpack the cartridge and remove the sealed cap of the liquid container;

Step 3: Put the cartridge into the atomizing device, then you can enjoy it.

**Stand-by state:**

After you screw the fully charged battery components into the atomizing device, and insert the cartridge into it, and insert into an inhaler, the Super Cigarette will be in the stand-by state. The cartridge fixed into is better to be used out within two weeks.

**Operating mode:**

The electronic circuit will start to work as the Super Cigarette is inhaled by mouth. And the indicator light at tip of the product will be lit simultaneously. Stop inhaling will terminate the atomization, and the operating mode will turn to standby state. It is recommended to place it horizontally and don't keep it upwards or inhale strongly, so as to prevent you from inhaling the liquid into your mouth, which may cause stimulus to your oral mucosa.

**Smoking method:**

Smokers smoke each ordinary cigarette by 14-16 mouthfuls, so after smoking 14-16 mouthfuls (equal to an ordinary cigarette) of the atomized cartridge, smoker should stop smoking about half an hour before smoking again.

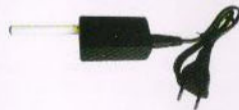
**Special Notice:**

1. To avoid over frequent usage of the product, once smoke it for sixteen times within one minute, the indicator light will continuously flash 10 times (about four seconds) for reminding.
2. If every time the user inhales more than five seconds, the light will continuously flash 10 times (about four seconds) tips do not affect normal use.
3. When the indicator light is continuously flash for 30 times (about nine seconds), it indicates the need to replace the battery components.
4. Internally controlled by a micro-computer program, this device has an automatic cleaning function. When the user inhales for 1500 times in accumulation, the indicator light at tip of the Battery components will shine continuously for 20 seconds, which shows that the computer Controlled program is automatically carrying out the cleaning task on this device.

**Directions for the use of battery components and charger**

In case the indicator light flashes, recharge the battery components with the accompanying charger. Please screw in the battery components into the charger. Two or three hours later, the battery components is fully charged when the indicator light turns green from red. Take out the battery components and cut off the charger's power supply. (The original set does not contain the car charger power plug or USB charger, which can be bought separately if needed.)

When the battery components fully screw into the charger, The indicator light is continuously flash 10 times (about five seconds) tips, and the indicator light on the charger turns red from green into the start of charging.



Charging common charger



Charging with car charger



USB Charger

### Precautions for use of battery components and charger:

1. Keep the battery components away from high temperature source while charging.
2. Don't connect anode and cathode of the battery components with metal, to prevent short circuit.
3. Do not weld the battery components directly and pierce through the battery with nails or other edge tool.
4. In case of battery's leakage happens, if your eye contacts with electrolyte leaking from the battery, Don't rub it. Please wash it with clean water immediately and ask for doctor's help.
5. If the battery components peculiar smells, burns, changes color, deforms or any other unusual case happen during charging, cut off the power supply, and take the battery components out from the device or charger and stop using.
6. The charger can be used for the special lithium battery components of the Super Cigarette only; Please don't attempt using this charger to charge other types of batteries.
7. The normal charging time should be 2-3 hours.
8. If the Super Cigarette is not to be used for a long period of time, take the battery components out from the device or charger. Keep the battery components stored alone in a low temperature and dry place after fully charged.

### 1. Suitable user

- The people who have been smoking for a long period of time, and suffering uncomfortable feeling.
- The people working in no-smoking places but with the habit of smoking.
- The smokers who want to quit smoking. Painless smoking abstention can be realized gradually by decreasing nicotine content.

### 2. Forbidden user

- Minors under 18 years old.
- People without the habit of smoking.
- People sensitive to nicotine or any other ingredients in the inhalant.
- Pregnant and breast feeding women.
- The patients who should avoid smoking.

1. When the indicator light is continuously flash for 30 times (about nine seconds), please change a charged battery components.
2. When the smoke volume is reduced, please change a new cartridge. or a charged battery components.
3. Put on a new cartridge and fully charged battery components, if there's no smoke or few smoke, you can examine the e cigarette according to the following reasons and try to solve the problem yourself.
  - Reason : The battery components and atomizing device do not screw tightly, leads to poor contact of the battery components and atomizing device.  
Solution: to screw it correctly and tightly.
  - Reason : Put on the cartridge and inhale immediately.  
Solution : To inhale in a few minutes after putting on the cartridge.
  - Reason : Too much liquid stays inside the atomizing device.  
Solution : Take off the cartridge, and lash the atomizing device in order to clear up the liquid inside the atomizing device.

*Note:After the above solution,if the failures still remain or you feel uncomfortable during use,please Stop using immediately,and contact the sales agent or our company.*

### **About atomized cartridge and nicotine**

The atomized cartridge contains nicotine. The nicotine is a kind of natural alkaloid extracted from tobacco leaf or other plants containing nicotine. It is the main substance that makes smokers addicted. When a person is smoking, nicotine comes into the blood and the in just 7-9 seconds, and now smokers will respond with a series of physiological reactions such as happiness. Free from harmful substances such as tar and carbon monoxide, the atomized cartridge can minimize the smoking harms for most smoke-quitters; while at the same time, it can also release the quitter from discomfort reaction during smoke abstention, for it contains just a small quantity of high purity nicotine. The virulence testing of the atomized cartridge by poison test of several authoritative organizations has demonstrated its safety.

### How many cigarettes are equal to one atomized cartridge?

Different smoking habits of individual smoker and various brands of cigarettes result different levels of nicotine contents. For example, usually the marking on ordinary cigarette packet is marked by 1.1mg nicotine, indicating that each cigarette in the box contains 1.1mg nicotine. Thus, one package of ordinary cigarette (20 branches) contains nicotine is equal to  $1.1\text{mg} \times 20 = 22\text{mg}$ . One atomized cartridge can be sucked is about 100 mouthfuls, equivalent to 7 branches of ordinary cigarette approximately. But the nicotine content is lower than ordinary cigarette with the equivalent cigarette potency. According to nicotine content, the atomized cartridges are classified into four kinds: high, medium, low and zero.

HIGH (nicotine content: 6.5mg)

MED (nicotine content: 5.0mg)

LOW (nicotine content: 4.0mg)

NO (nicotine content: 0mg)

### Notices for use of cartridge

1. Read the instructions carefully before using the atomized cartridge.
2. The atomized cartridge is the special accessory and must be used with the Super Cigarette only.
3. The atomized cartridge is a kind of disposable product, do not reuse. Please dispose of it properly after use, and keep it out of children's reach.

### Precautions for use of cartridge

1. Storage: keep in a cool and dry place; Shelf life: 24 months.
2. Please keep it out of children's reach.
3. Please use before the expiry date printed on the package.
4. Do not put it into mouth or contact with mucous membrane
5. User unsuitable for smoking is not allowed to use this product.
6. Nicotine and atomizing agent in the cartridge shall be prepared strictly in correct proportion; mixing With other liquid is forbidden.